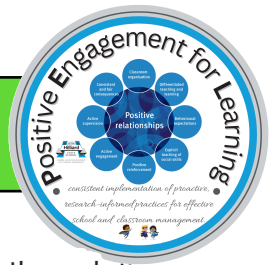




2023 HILLIARD STATE SCHOOL POSITIVE ENGAGEMENT FOR LEARNING REPORT



Positive Engagement for Learning (PEL) provides a continuum of support for all students through three tiers of intervention with each tier representing levels and intensity of intervention. It uses a whole school approach to differentiated teaching and learning which deliberately prepares for, and responds to, the diverse needs of all students to maximise engagement.

The effectiveness of the PEL framework is monitored through the collection of four sets of data throughout the school. This data is then used to create the PEL Action Plan.

DATA	PURPOSE
Tiered Fidelity Inventory (TFI)	Annual check-up of Tier 1 features in place
Effective Behaviour Support survey (EBS)	Staff opinion survey on the effectiveness of school wide PEL implementation
Triangle	Shows percentage of student cohort requiring Tier 2/3 intervention
Average Major per day per month	Comparison across two years of major referrals per day per month

2023 Highlights

- TFI - 90% of Tier 1 features in place. Increase of 43% from 2022.
- EBS - 90% of school wide PEL features in place. Increase of 31% from 2022.
- Triangle - 87.73% of HSS students in Tier 1
- Average Major per day per month - 2.3 referrals
- Reviewed and updated HSS Student Code of Conduct
- 73.8% students surveyed liked the Hilliard Hero animal totem cards
- 81.7% of students surveyed liked the Hilliard Hero cards vouchers class draw on a Friday

2024 Goals

- Establish Tier 2 team
- Tier 2 team training
- Establishing Tier 2 processes and documentation
- Begin implementation of Tier 2 intervention support systems
- Maintain Tier 1 support systems